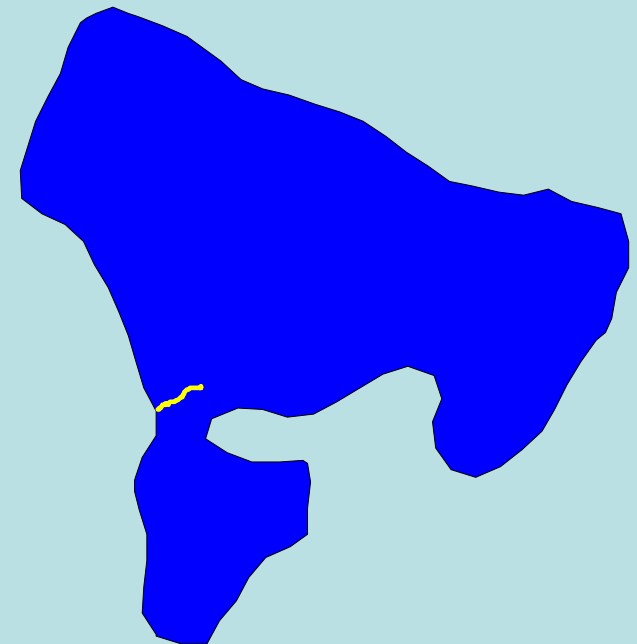
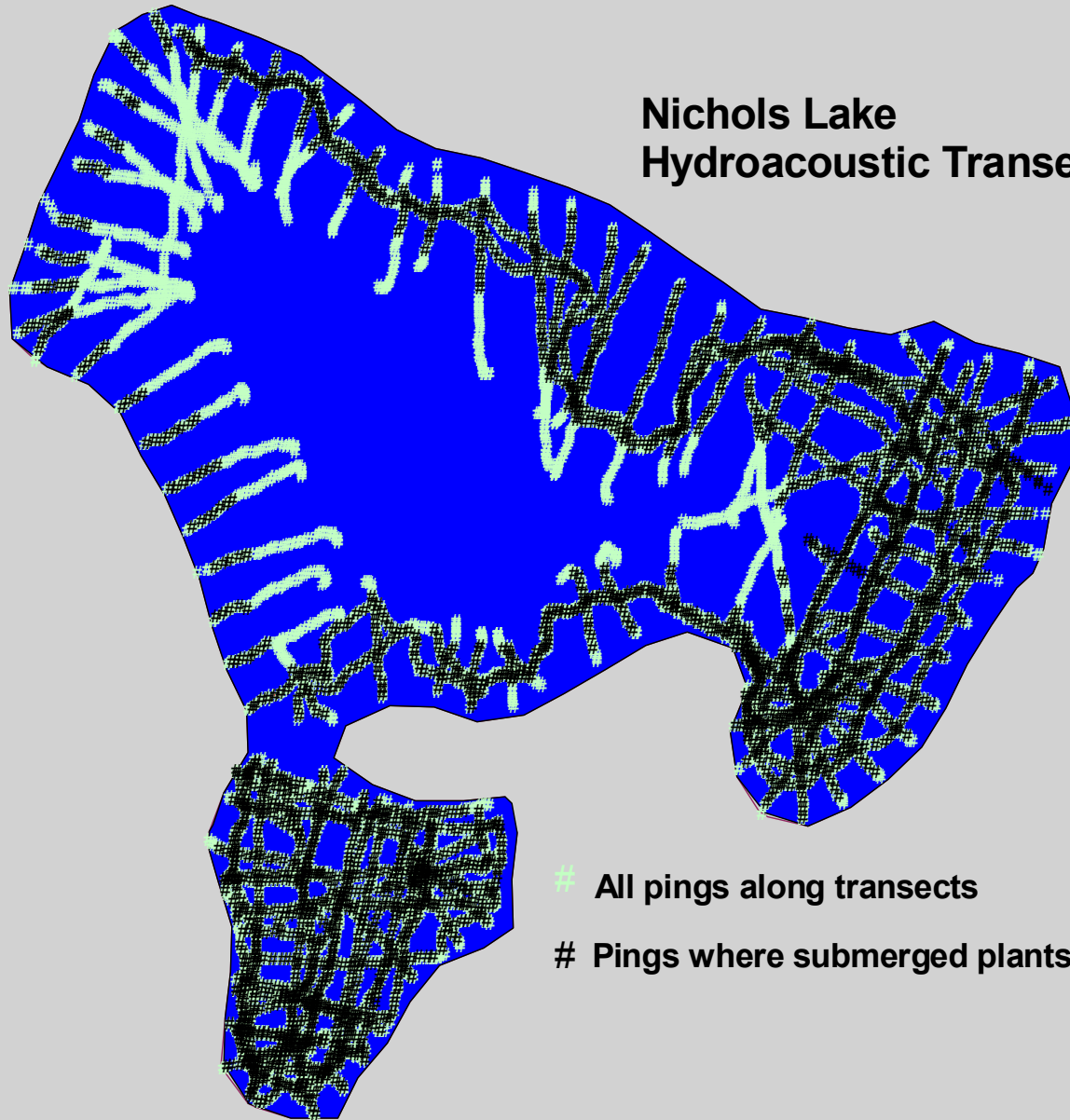


Hydroacoustic estimates of plant (relative) density (dry g/m²) within cells 10 m wide by 1 m deep. [Nichols Lake Transect T450; 7/24/02]



Nichols Lake Hydroacoustic Transects

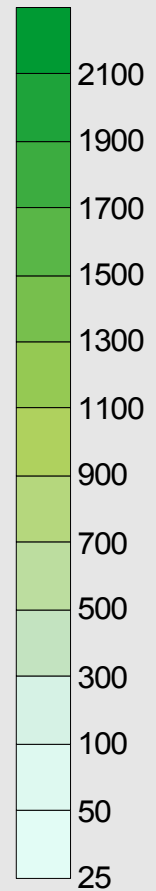
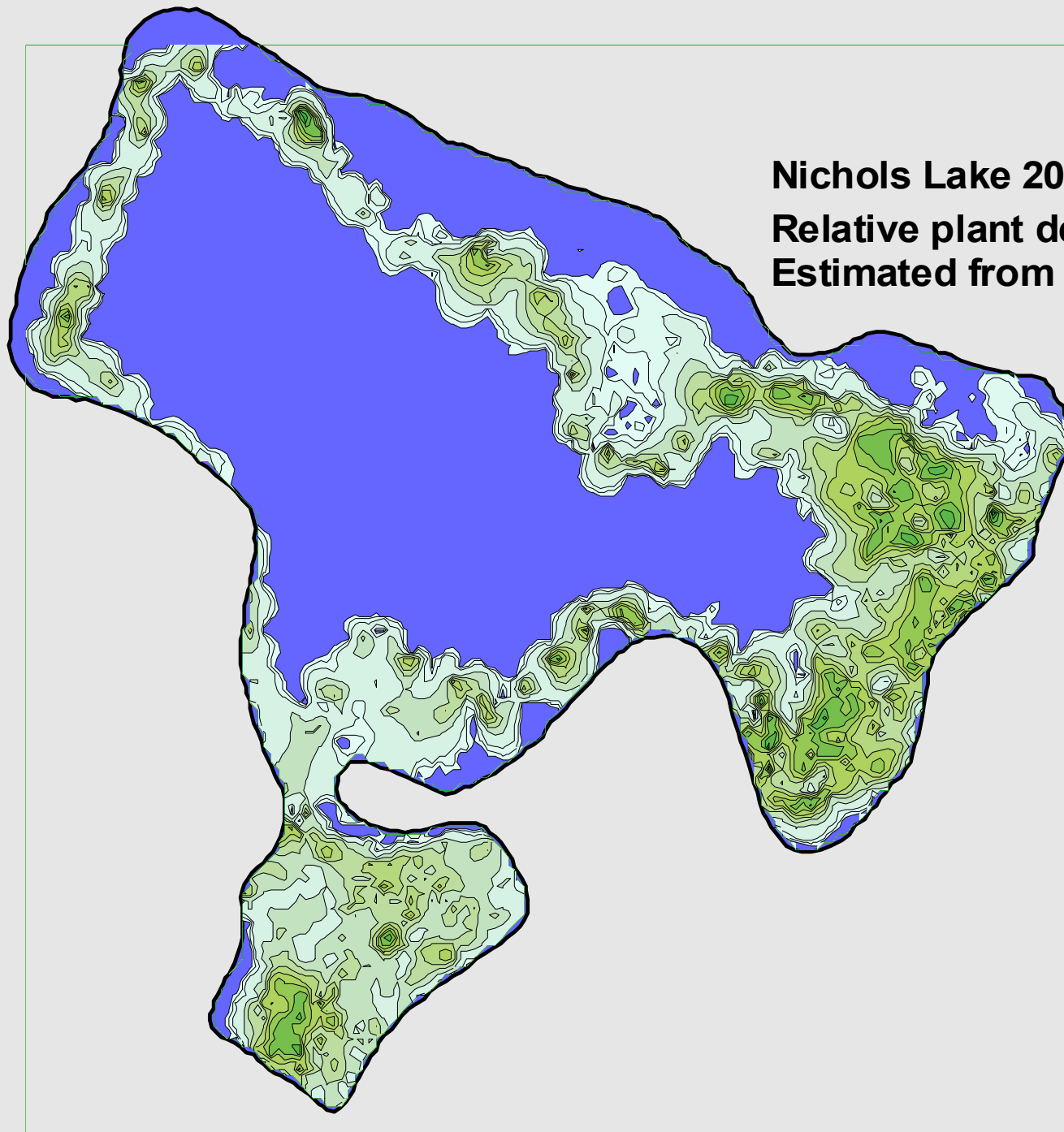


All pings along transects

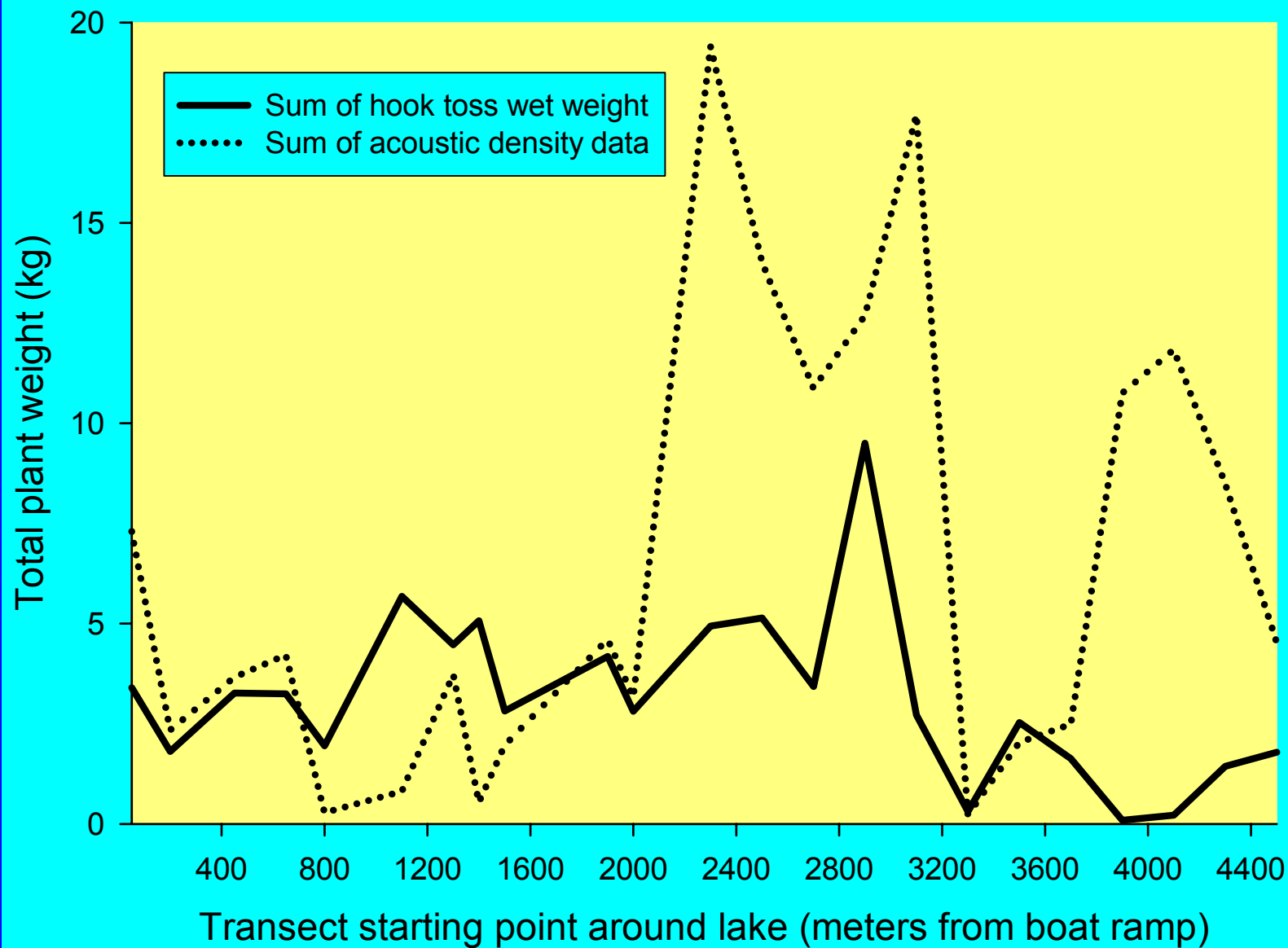
Pings where submerged plants detected

Nichols Lake 2002

Relative plant density (dry g/m²)
Estimated from acoustic survey



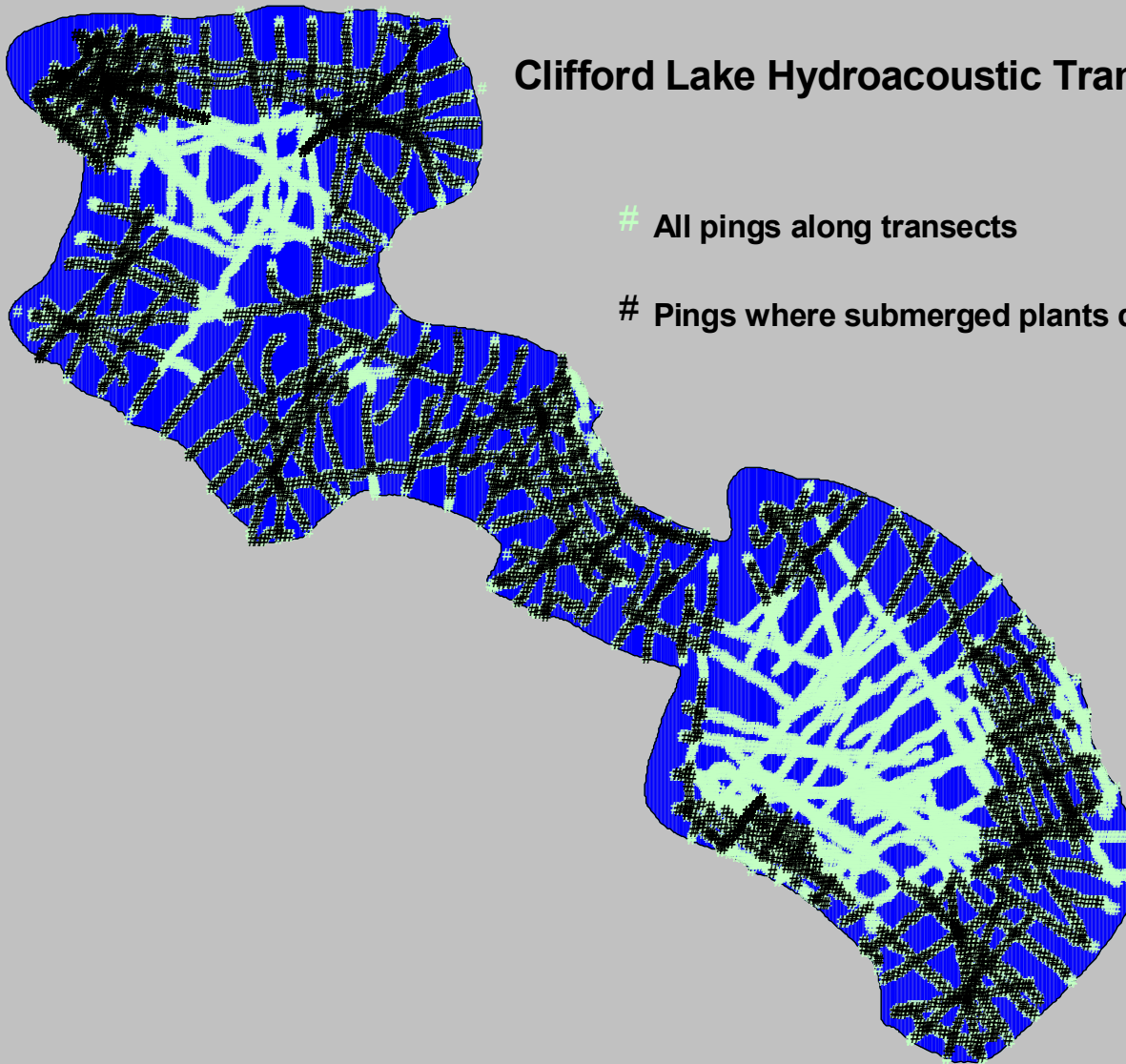
Nichols Lake 2002



Clifford Lake Hydroacoustic Transects

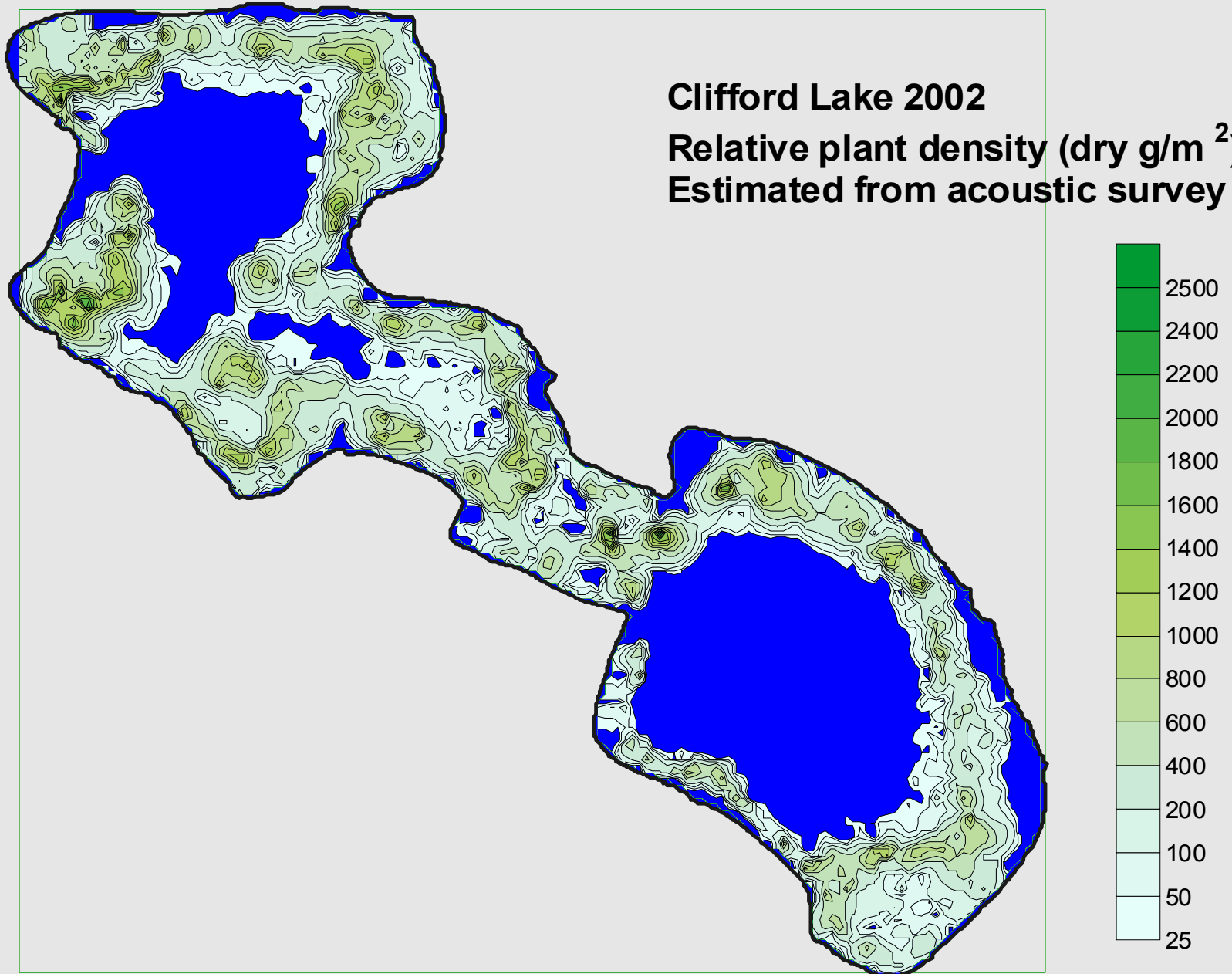
All pings along transects

Pings where submerged plants detected

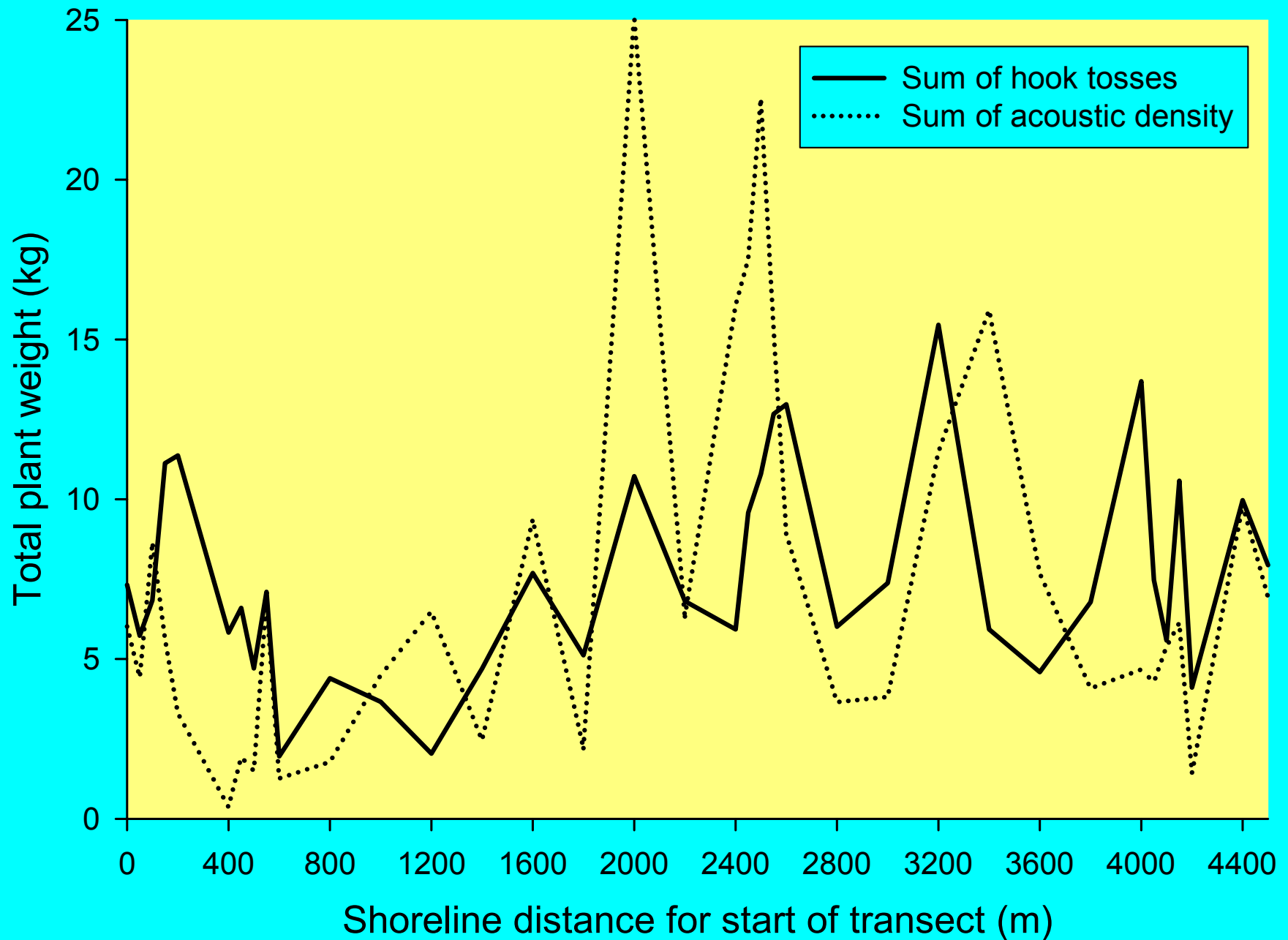


Clifford Lake 2002

Relative plant density (dry g/m²)
Estimated from acoustic survey

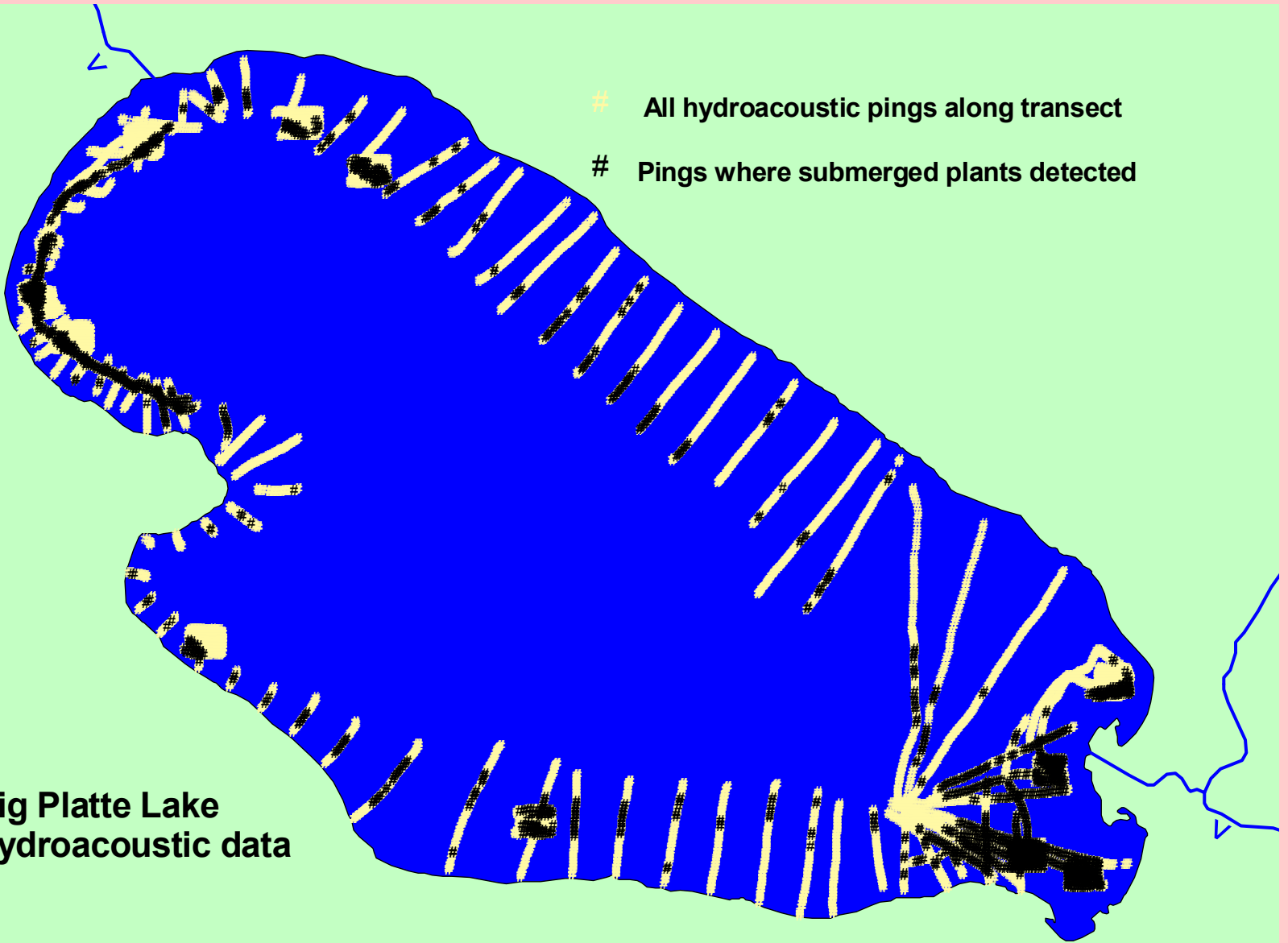


Clifford Lake 2002

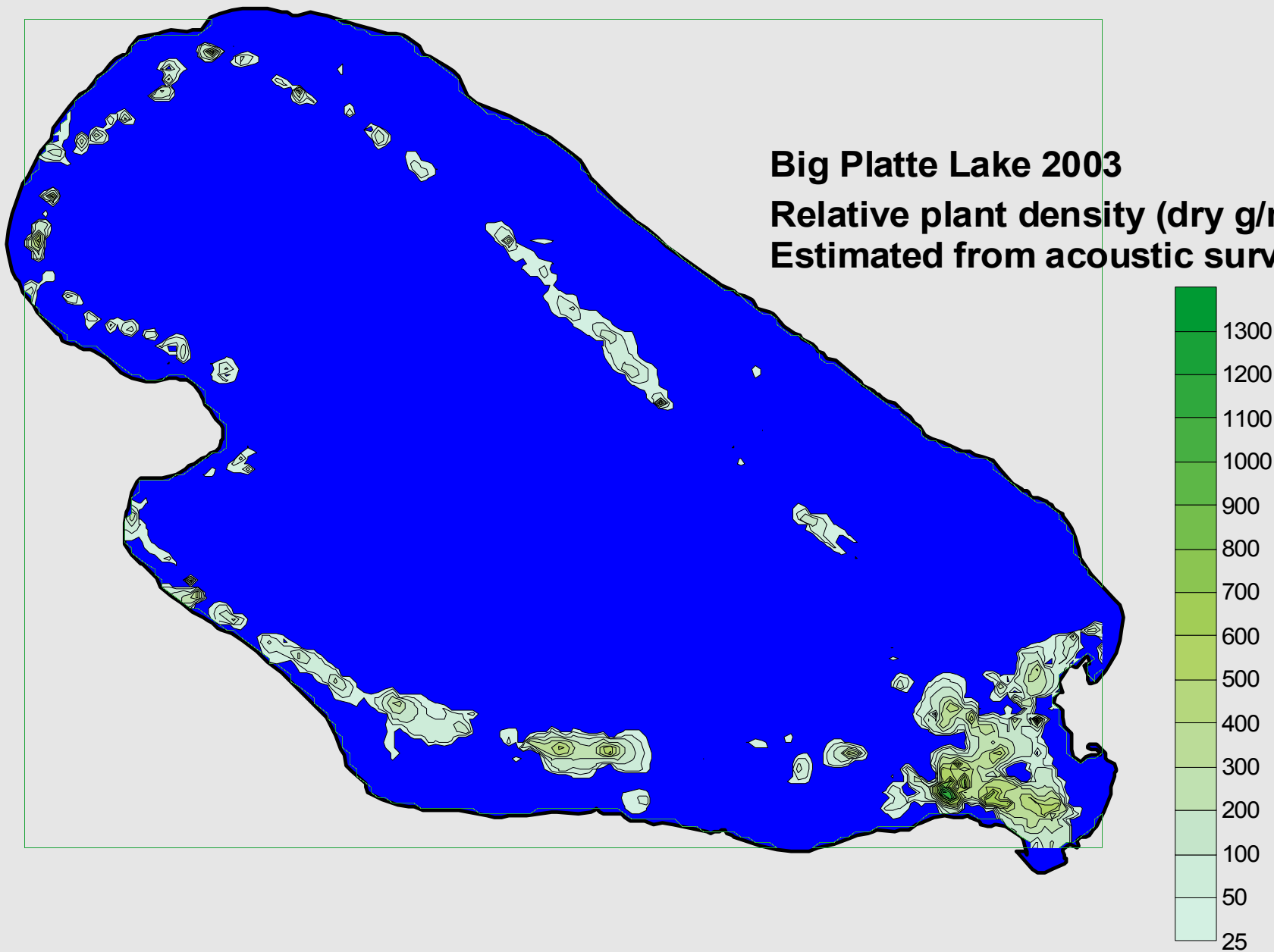


**Big Platte Lake
Hydroacoustic data**

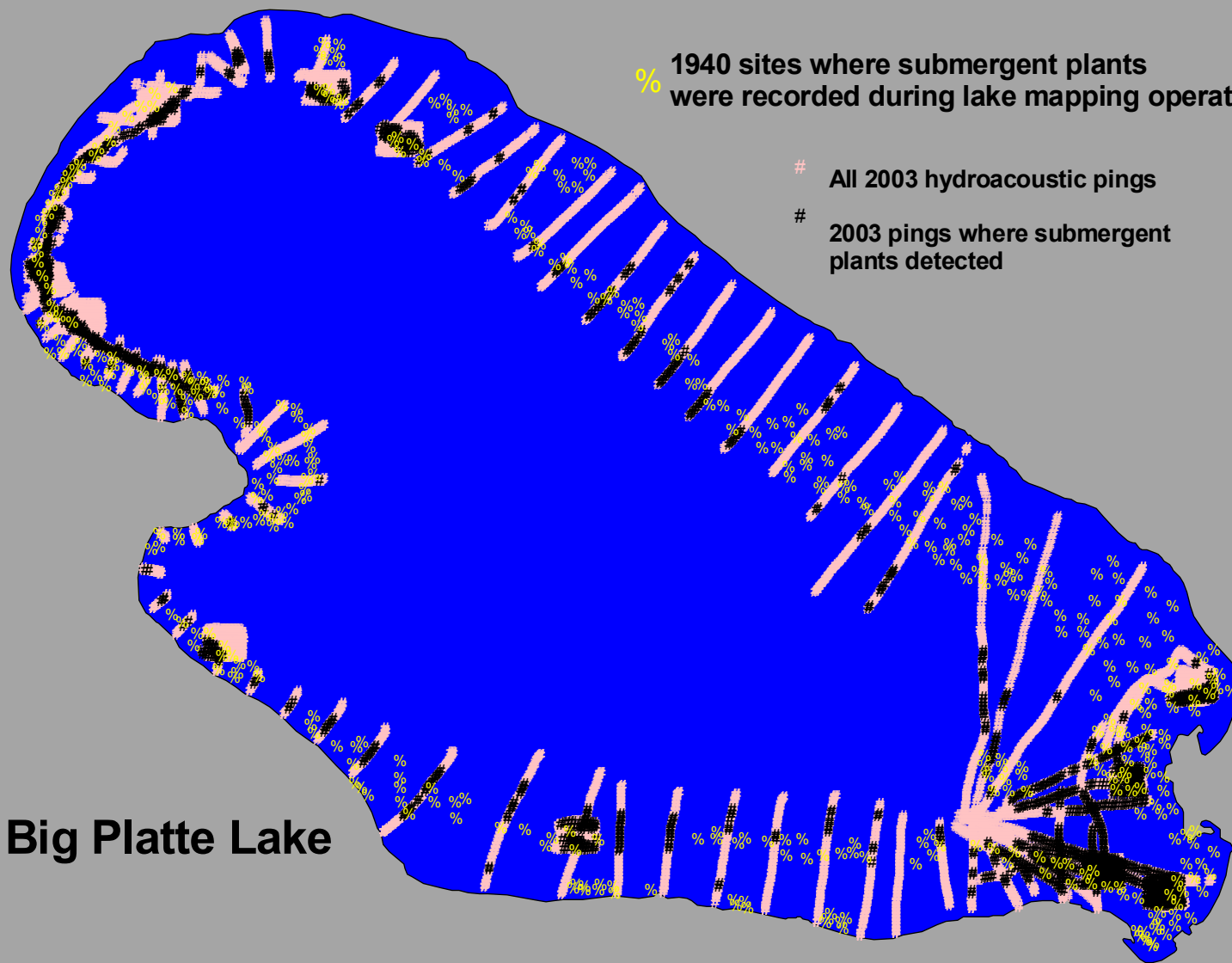
- # All hydroacoustic pings along transect
- # Pings where submerged plants detected

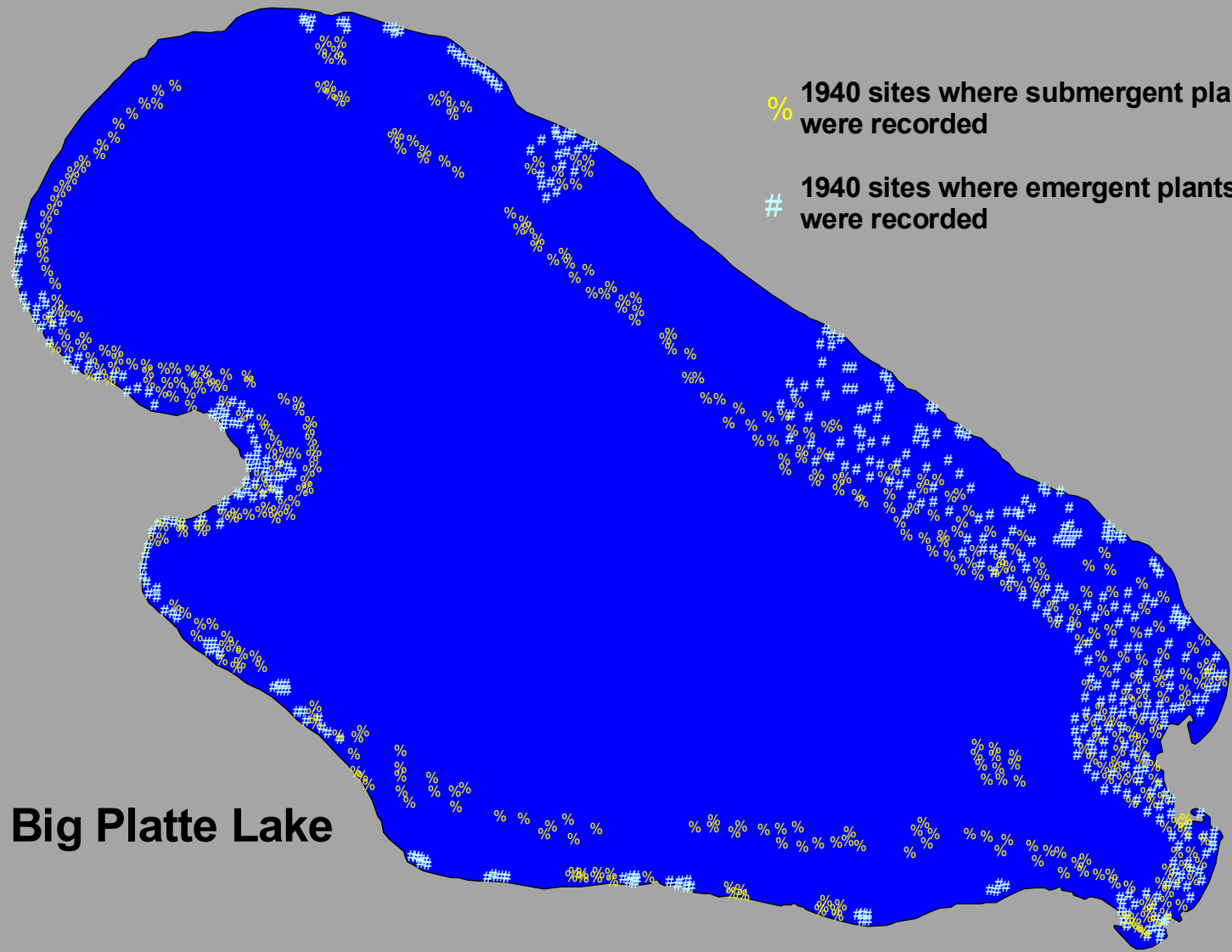


Big Platte Lake 2003
Relative plant density (dry g/m²)
Estimated from acoustic survey



Big Platte Lake



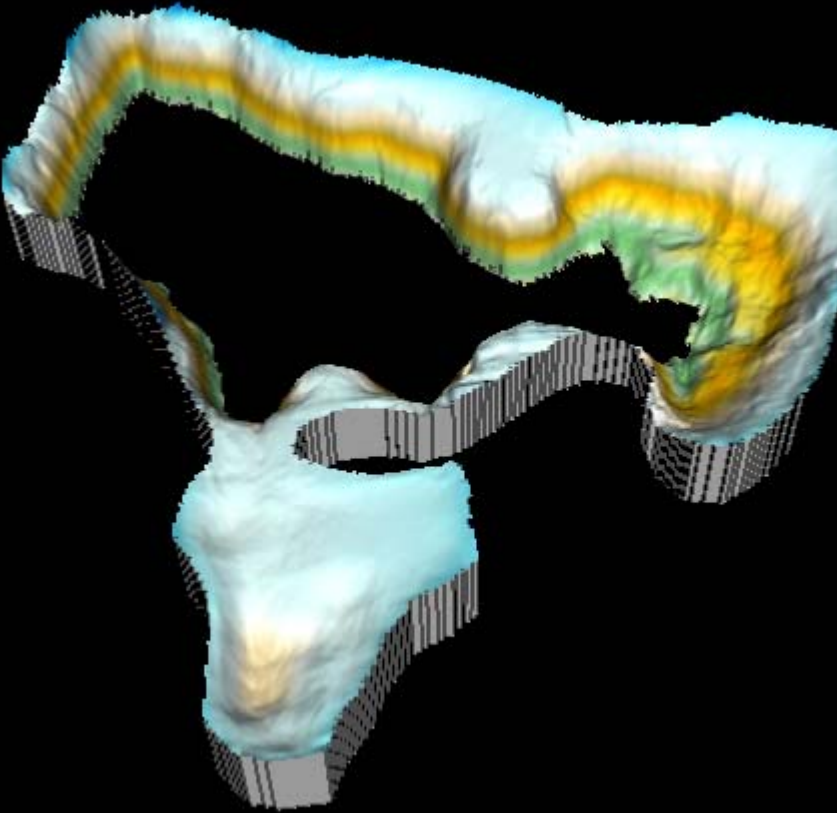


% 1940 sites where submergent plants were recorded

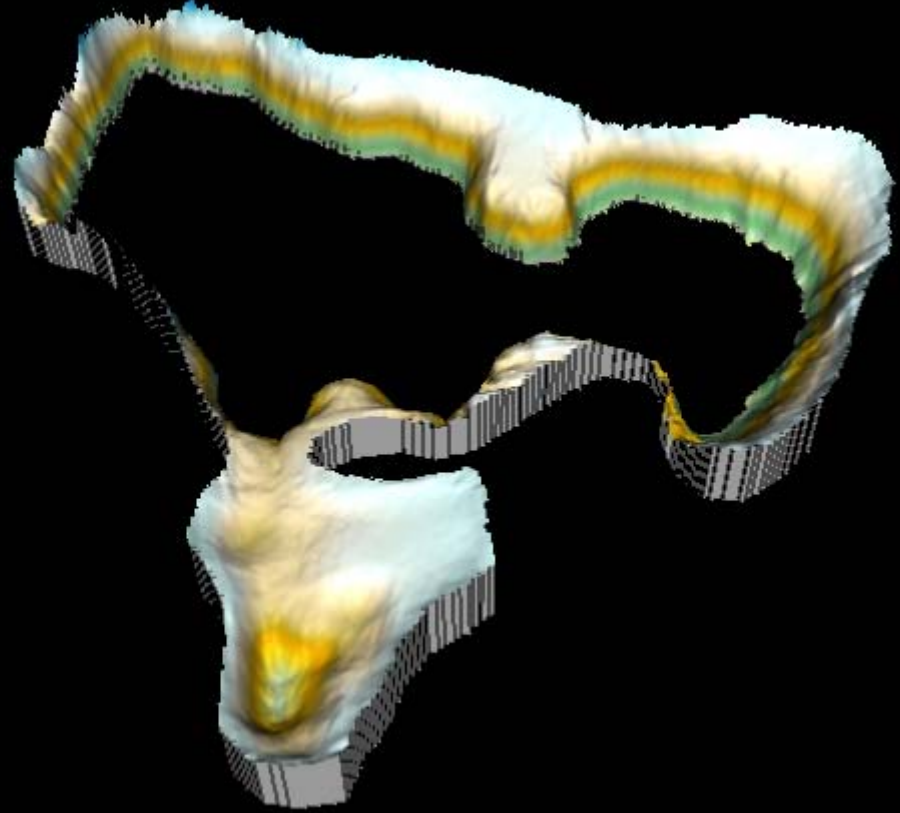
1940 sites where emergent plants were recorded

Big Platte Lake

Nichols Lake

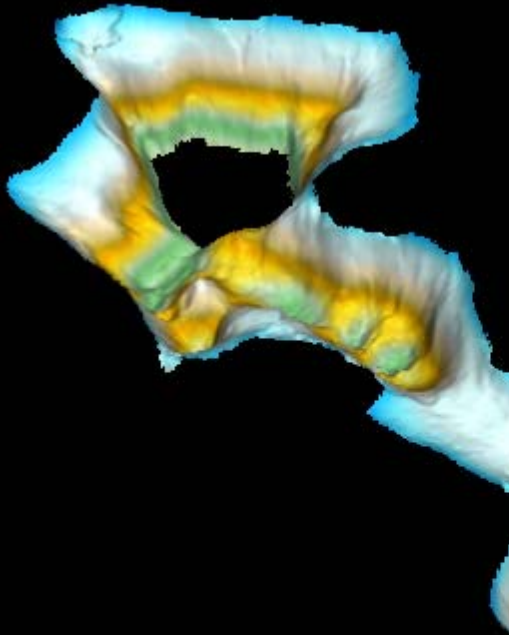


8 meter littoral zone
Volume = 8.2% of total lake

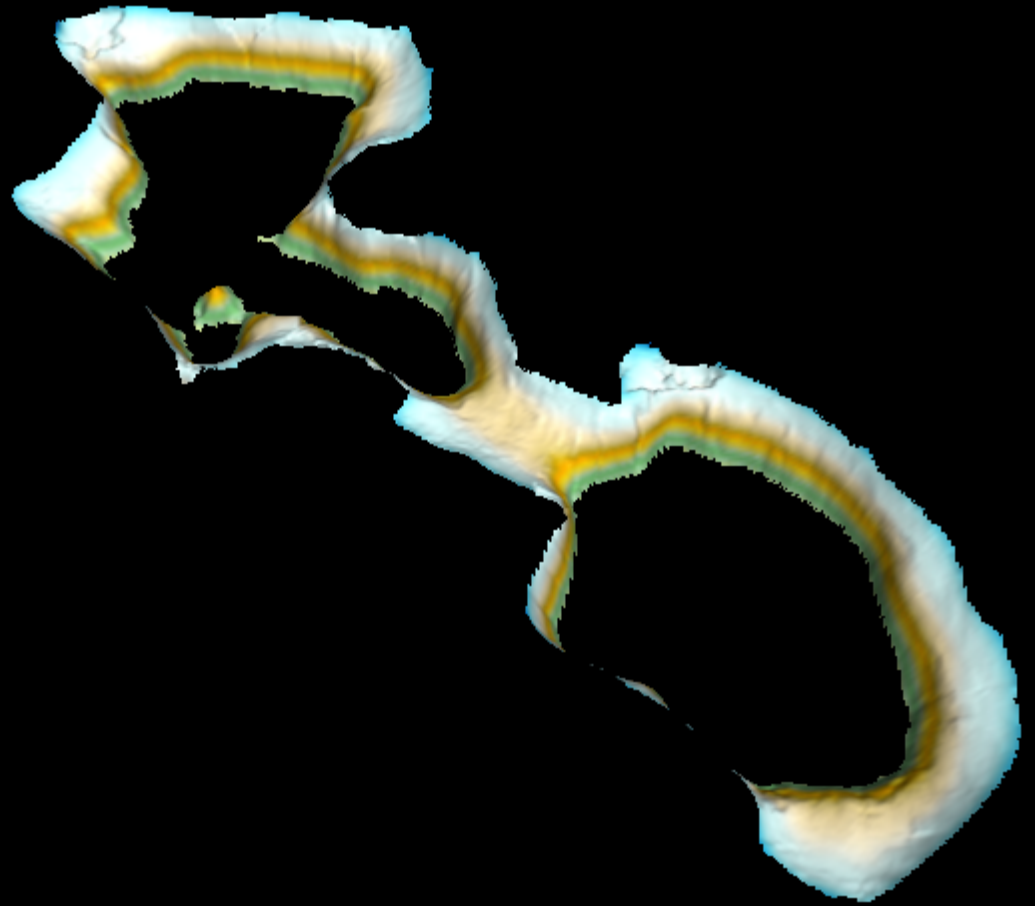


15 foot (4.6m) littoral zone
Volume = 3.7% of total lake

Clifford Lake

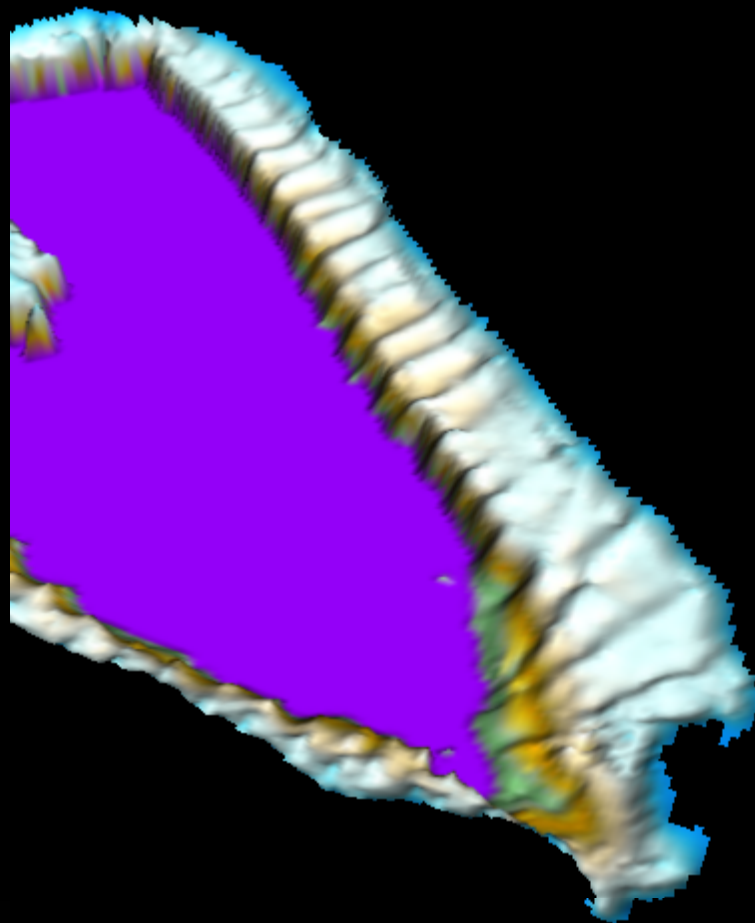
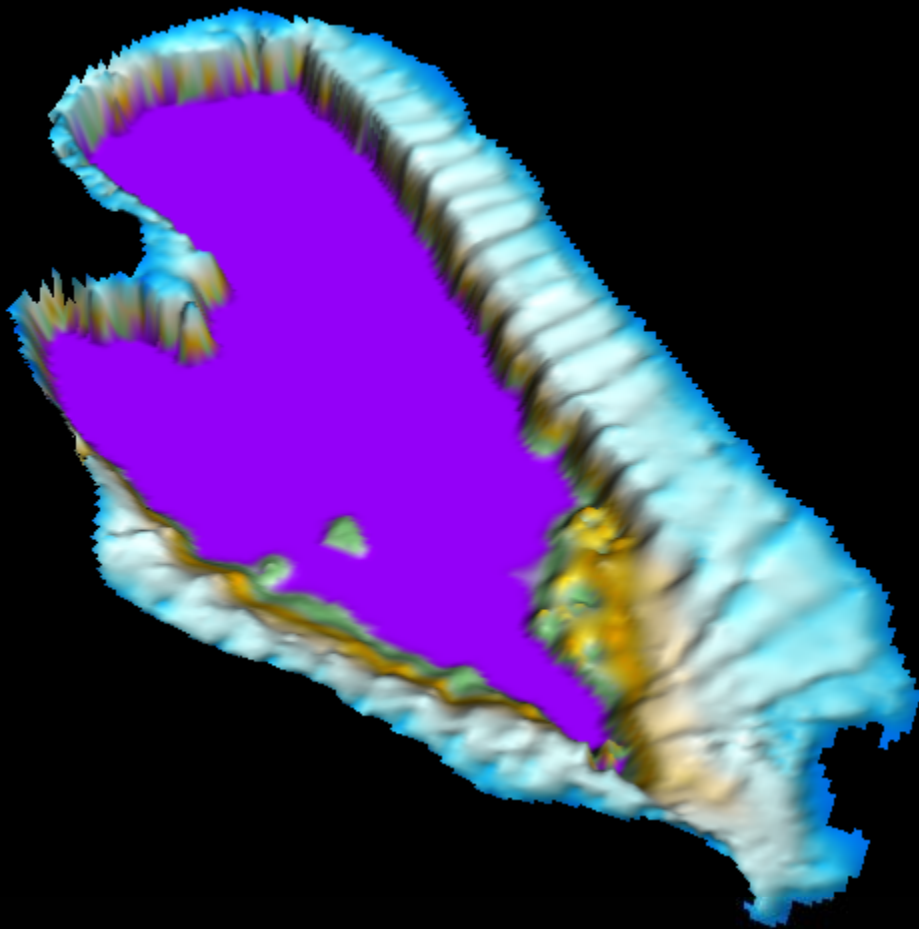


Volume = 66.9% of total lake



Pelagic (open water) zone
Volume = 22.6% of total lake

Big Platte Lake



Comparison of Nichols, Clifford, and Big Platte lakes						
	Platte Lake	Percent of total vol.	Clifford Lake	Percent of total vol.	Nichols Lake	Percent of total vol.
Surface acres	2,481		197		158	
Total volume (m ³)	79,993,664		3,638,849		14,619,562	
Volume of littoral (4.7m extent)	7,237,355	9.05	821,922	22.59	545,633	3.73
Volume of littoral (8m extent)	13,620,727	17.03	2,182,712	59.98	1,194,824	8.17
Surface acres in 8m littoral zone	1,281		159		100	
<i>Within 8m littoral zone</i>						
Relative acoustic density dry wt. g/m ²	237.35		335.33		552.08	
Plant biomass (relative) lbs/acre	26.60		37.59		61.88	
Mean bottom coverage by plants (%)	5.91		50.18		47.54	
Mean bio-volume (%)	1.92		7.07		9.57	
Est. biomass (lbs) dry wt. of plants	2,014		3,003		2,944	

Station	Dry weight	
	Measured	Acoustic
T3grid	38.02	6.44
T5grid	108.87	118.76
T6grid	150.15	300.65